

CV. MITRA PERKASA  
Jl. Kapi Janula 15 D / 14, Malang  
Telp: (0341) 5473579, 7039809  
Fax: (0341) 722839

# Twelve Channel ECG

## SE-12 & SE-12 Express



 **EDAN**  
INSTRUMENTS

- 5.7 inch foldable LCD screen
  - Alphanumeric keyboard and one touch operation
  - Sleep mode to save energy and extend LCD life
  - Complete digital filters, resisting baseline drift, AC and EMG interference
  - Automatic measurement and interpretation tested with authoritative CSE database
  - Real-time waveform freezing
  - 120s seconds ECG waveform reviewable
  - Two-step exercise test with periodic recording
  - Built-in rechargeable Li-ion battery
  - 100 ECGs in internal memory
- Option:**
- PC-based data management software (Smart ECG Viewer)



SE-12

# Twelve Channel ECG

	<i>Preview and print: We make it possible to preview report for both real-time printing and file storage</i>	
	<i>Useful tools: Average template waveform together with accurate interpretation appreciated by authority CSE DATABASE (IEC 60601-2-51) which supplies measurement, diagnosis and Minnesota code</i>	
	<i>Waveform process: Doctor can edit the printing style, printing speed, sensitivity, and filter setting to get better waveforms instead of registered examination</i>	
	<i>Replay and record: Freeze and review waveforms backward and forward per second or page to grasp every arrhythmia then print out</i>	
	<i>File storage and Search: Patient data in internal storage including waveforms, assessment and diagnosis which could also be enlarged by flash disk or PC hard disk, support report search from internal memory</i>	



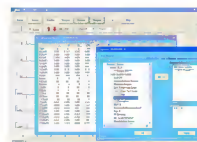
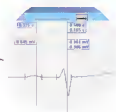
## SE-12 Express

- 12.1 inch color touch-screen
  - Alphanumeric keyboard and one touch operation
  - Automatic measurement and interpretation tested with authoritative CSE database
  - Real-time waveform freezing
  - 120 seconds ECG waveform reviewable
  - Waveforms and diagnosis results preview before printing
  - Automatic arrhythmia detection and recording
  - 200 ECGs in internal memory
  - Heart rate variability (HRV) analysis
- Stress test option:**
- Treadmills or bicycles and Suntech tango+ exercise blood pressure monitor supported
  - Customized exercise protocols
  - ST analysis and reports
- Other options:**
- PC-based data management software (Smart ECG Viewer)
  - Trolley and cable bracket

## Smart ECG Viewer



Manual Measurement



Interpretation



Compare Viewing for Different Examination



Stress Test upgradeable



# Twelve Channel ECG

	SE-12 Twelve Channel ECG	SE-12 Express Twelve Channel ECG
Input Circuit		Defibrillation protection built-in
Lead		Standard 12 leads
Acquisition Mode		simultaneous 12 lead acquisition (10-24 seconds adjustable)
A/D Converter		24 bits
Input Voltage Range		$\pm 5mV_{pp}$
Time Constant		$> 3.2s$
Frequency Response		0.05Hz – 150Hz
Calibration Voltage		1mV $\pm$ 2%
Sensitivity		2.5, 5, 10, 20, 10/5, AGC (mm/mV)
Input Impedance		50M $\Omega$ (10Hz)
Input Circuit Current		$< 10nA$
Noise Level		$< 12.5 \mu V_{p-p}$
Anti Baseline Drift		Automatic
Patient Leakage Current		$< 10 \mu A$ (220V-240V)
Patient Auxiliary Current		$< 0.1 \mu A$ (DC)
Filter		EMG filter 25Hz/35Hz/45Hz/OFF DFT filter 0.05/0.15/0.25/0.5/0.32/0.67Hz Lowpass filter 150Hz/100Hz/75Hz AC filter 50 Hz/60Hz
CMRR		$> 115 dB$
Recording Mode		Auto/Manual/Rhythm/R-R Analyse
Rhythm Lead		Single lead or three leads selectable
Power Supply		AC: 100V-240V, 50/60Hz
Battery	Built-in rechargeable Li-ion battery: voltage=14.4V, for about 100 copies ECG printing	Built-in rechargeable Li-ion battery: voltage=14.4V, for about 400 copies ECG printing
Recorder		Thermal printer
Record paper		Folded paper, Rolled paper
Paper width		216mm, 210mm
Record Speed		5mm/s, 10mm/s, 12.5mm/s, 25mm/s, 50mm/s ( $\pm 3\%$ )
Dimension	420mm x 330mm x 105mm	420mm x 330mm x 120mm
Display	320 x 240 dot single color LCD	800 x 600 multicolor LCD
External Input/Output		Input: $> 100K\Omega$ ; Sensitivity 10mm/V $\pm 5\%$ Output: $< 100\Omega$ ; Sensitivity 1V/mV $\pm 5\%$
Communication ports		Ethernet, RS232



All rights reserved.  
 Features and specifications are subject to change without notice

Distributed By : **PT. ENDO INDONESIA**  
 Add : Jl. Undaan Wetan 46  
 Surabaya 60273  
 Telp: +62 31 546 3636  
 Fax : +62 31 535 4867  
 Email : [info@endo.co.id](mailto:info@endo.co.id)  
 Web : <http://endo.co.id>




ENIG-ECG- SE12 -V1-1-20090623